

« »

c

18

2016



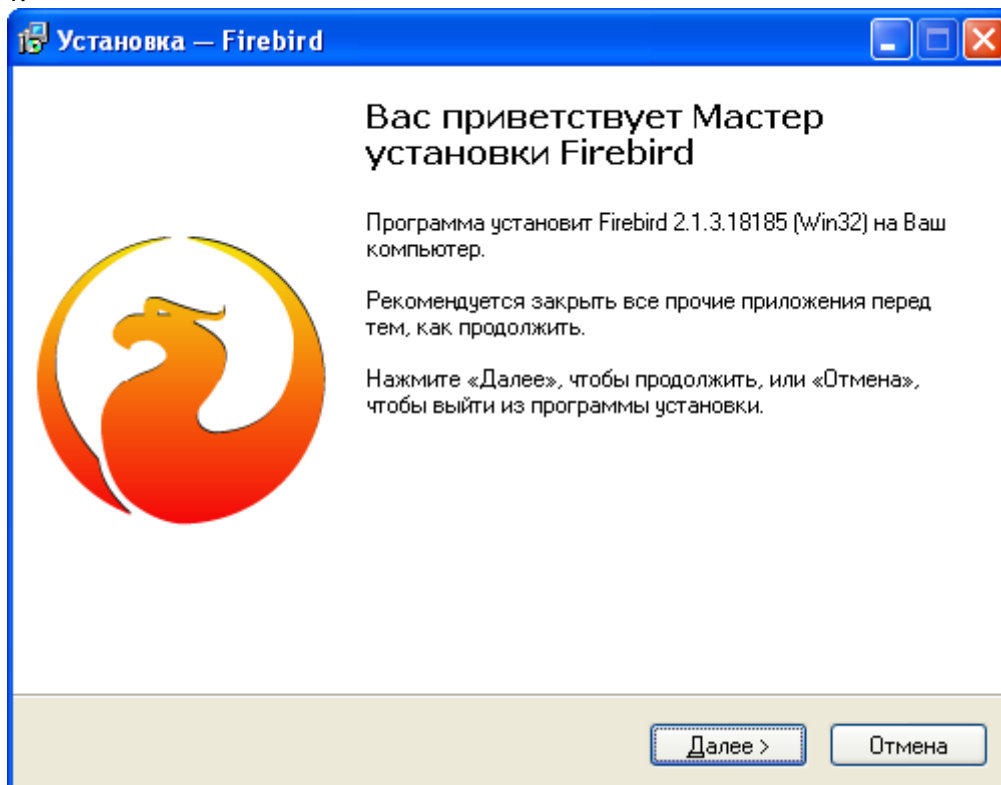
## 1.

( ) : ( CourierLight)

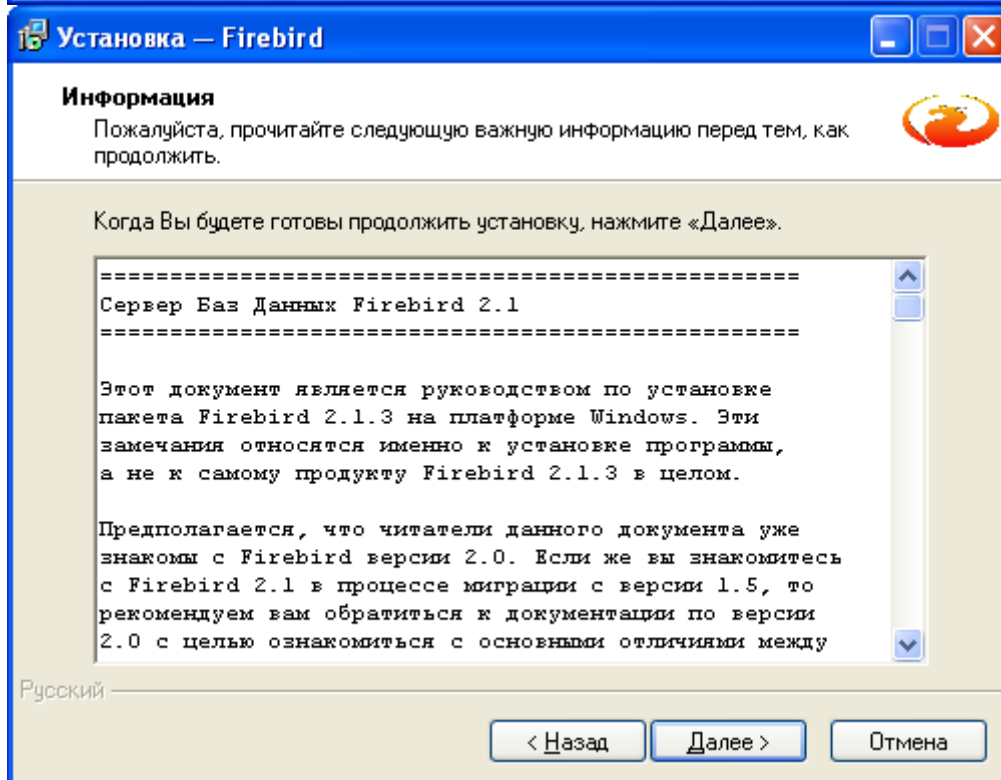
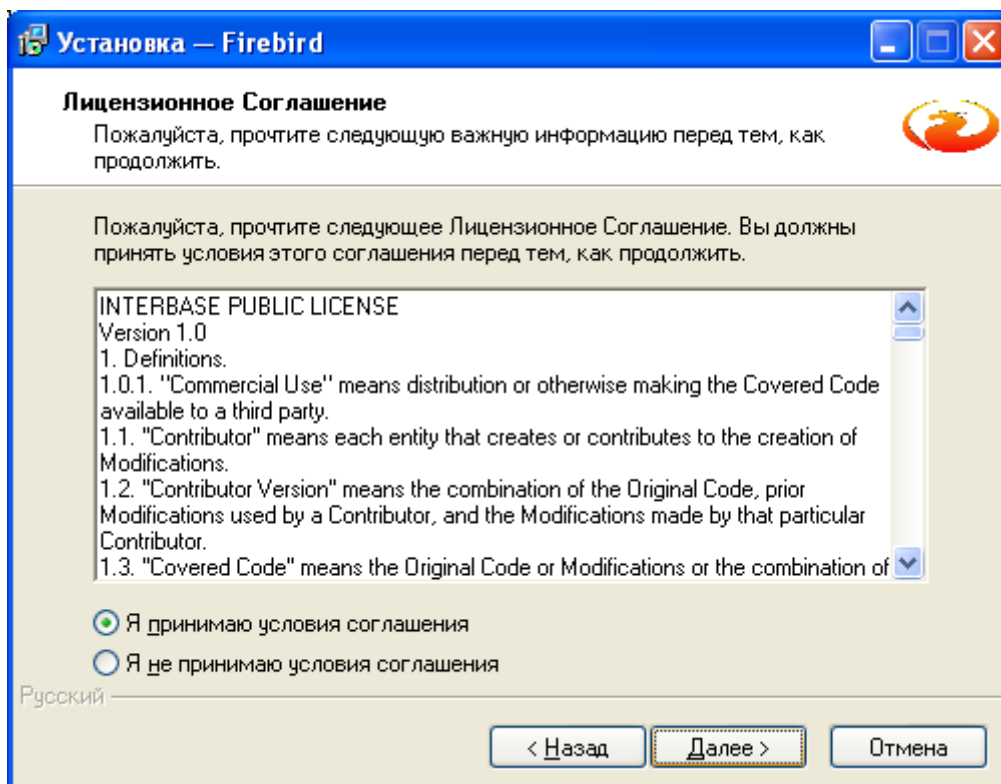
/		
1		í \DISTRIBUTIVES\firebird\Firebird-2.5.0.26074_1_Win32.exe
2	UDF-	...\DISTRIBUTIVES\firebird\UDF
3	( )	...\DISTRIBUTIVES\HK-Software\IBExpert\IBExpert.exe
4		í \DATABASES\gks.fbk
5		í \EXECUTE\CourierLight.exe
6		í \EXECUTE\CourierLight.ini

## 2.

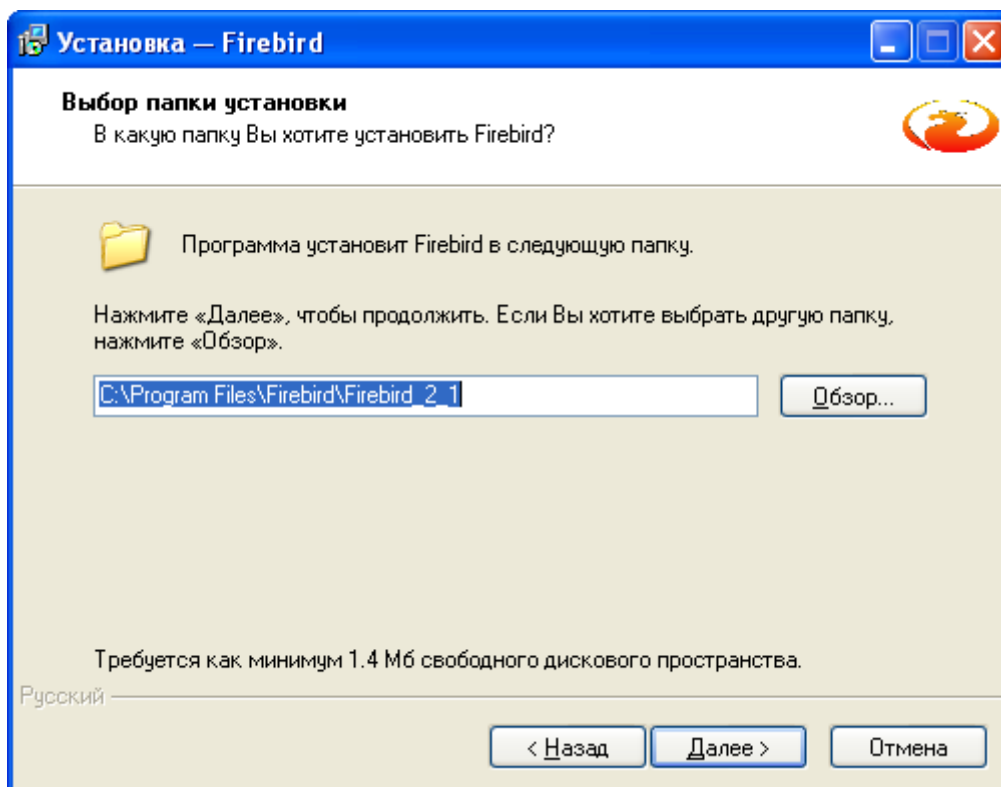
1. \.
2. Firebird-2.5.0.26074\_1\_Win32.exe
- 3.
- 4.



- 5.

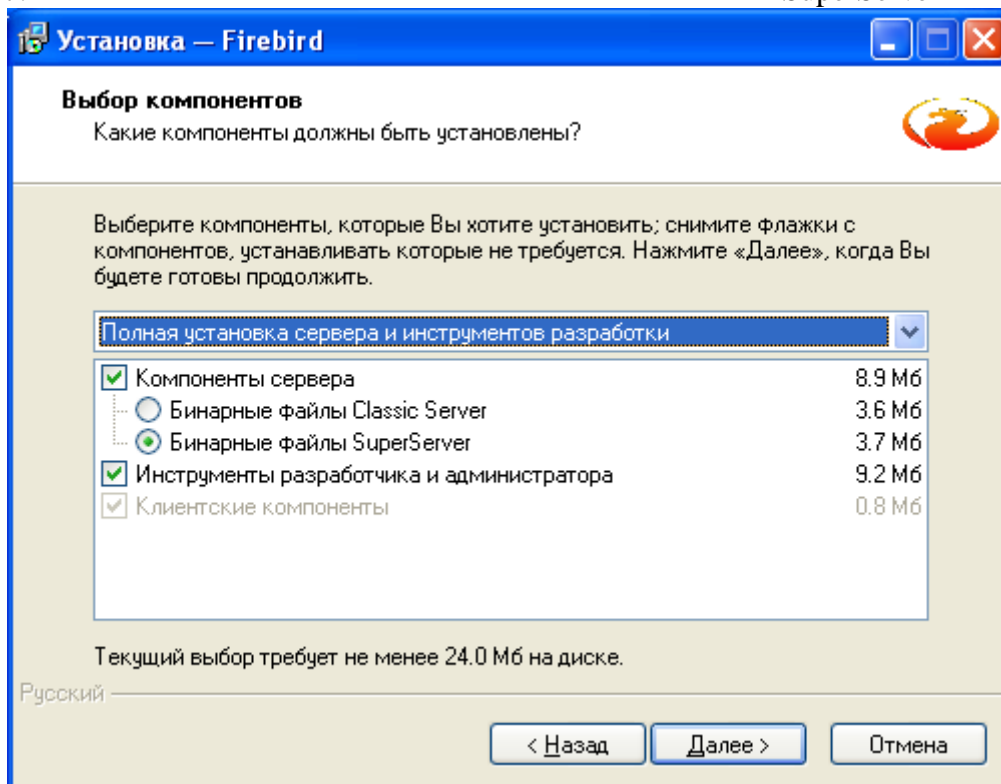


6. ( )  
2.5 C:\Program Files\Firebird\Firebird\_2\_5

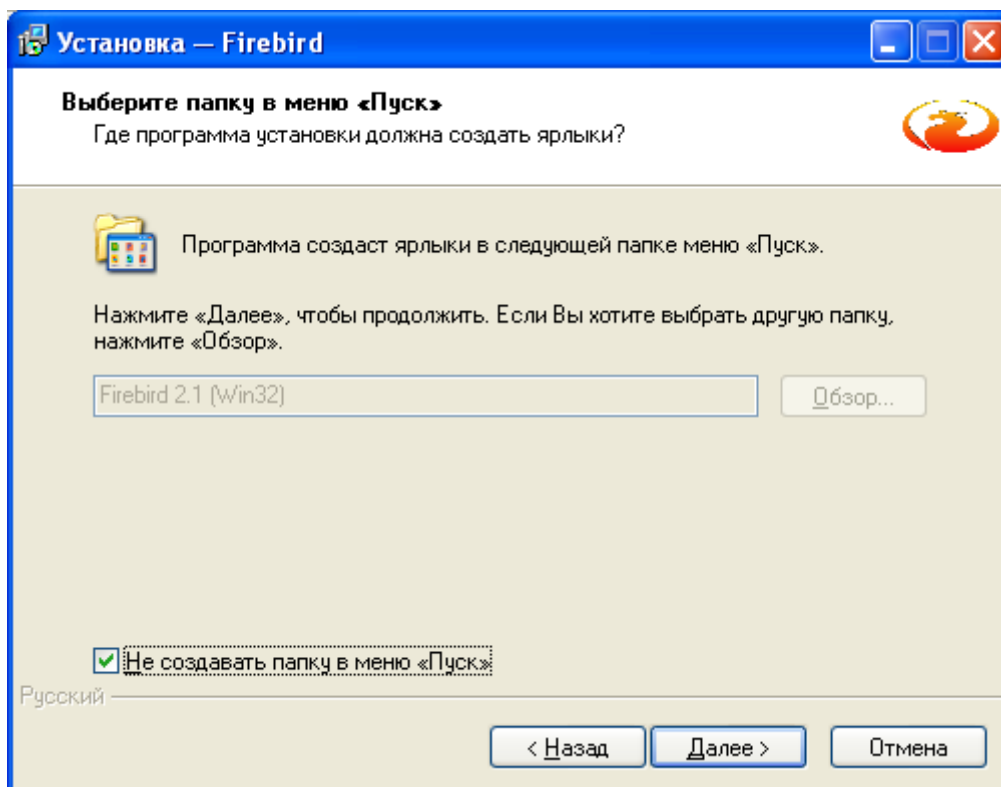


7.

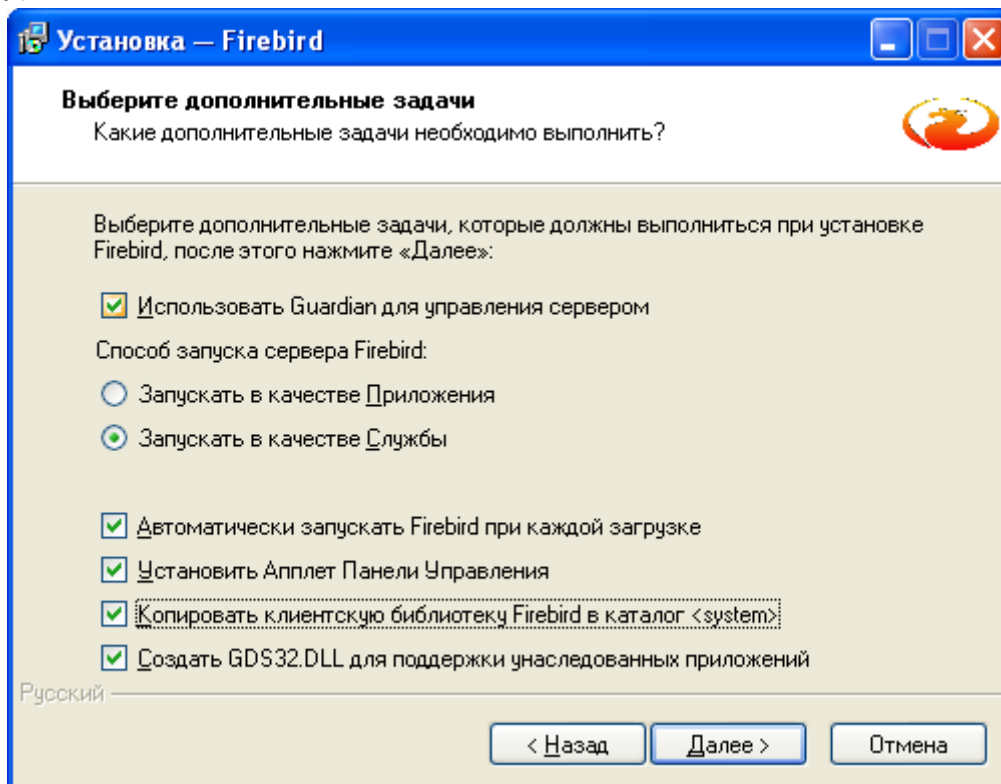
SuperServer



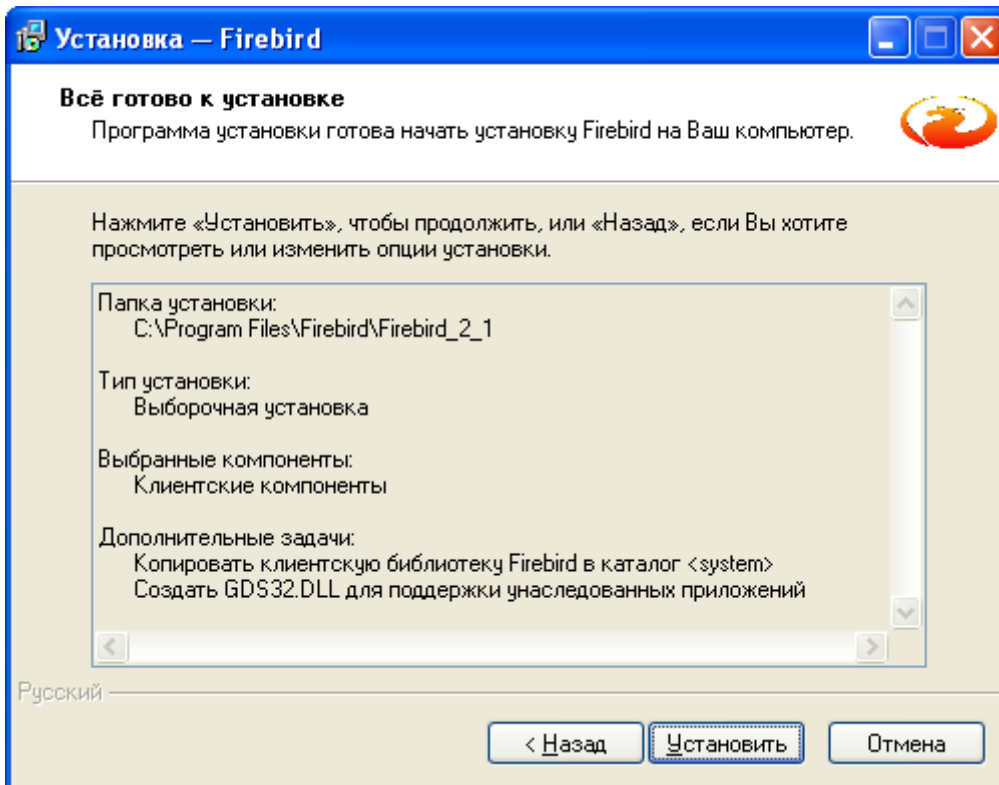
8.



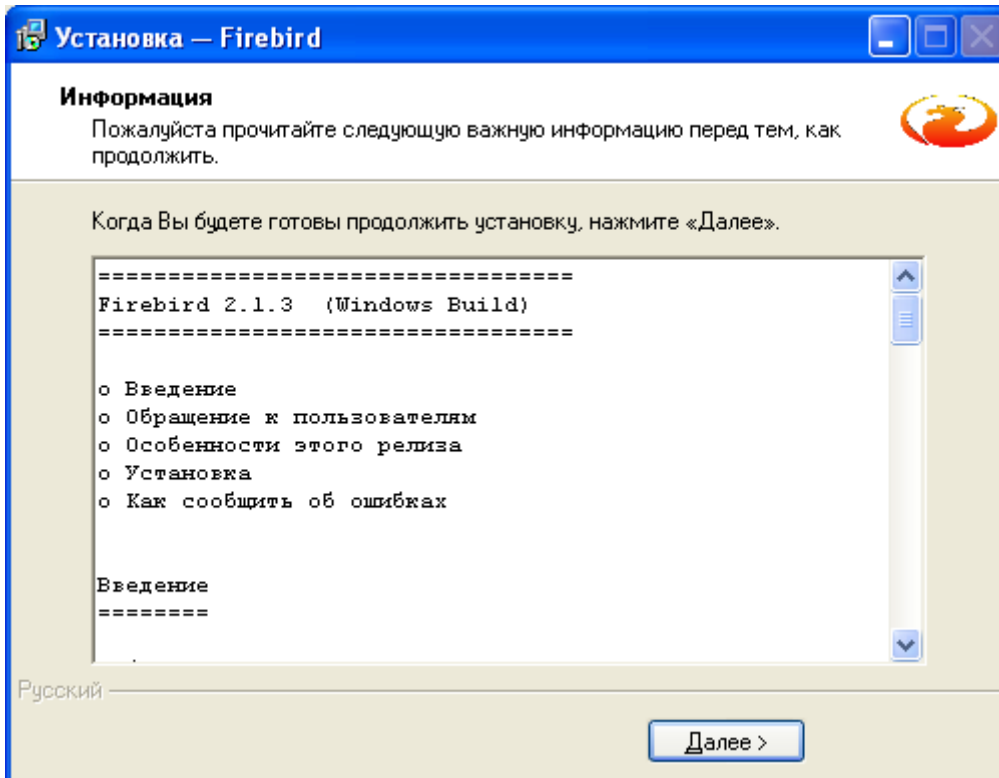
9.



10.



11.



12.

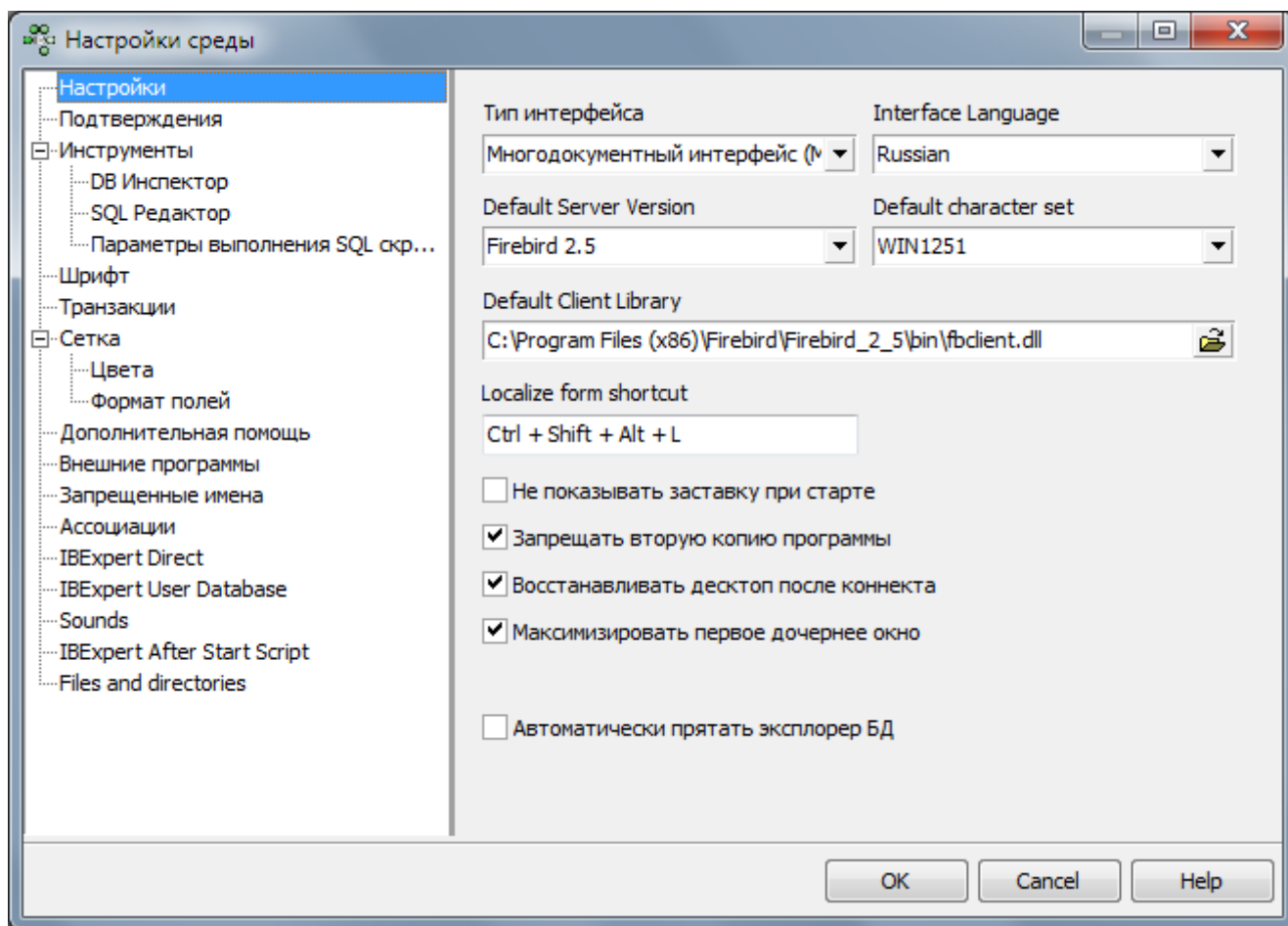




3.

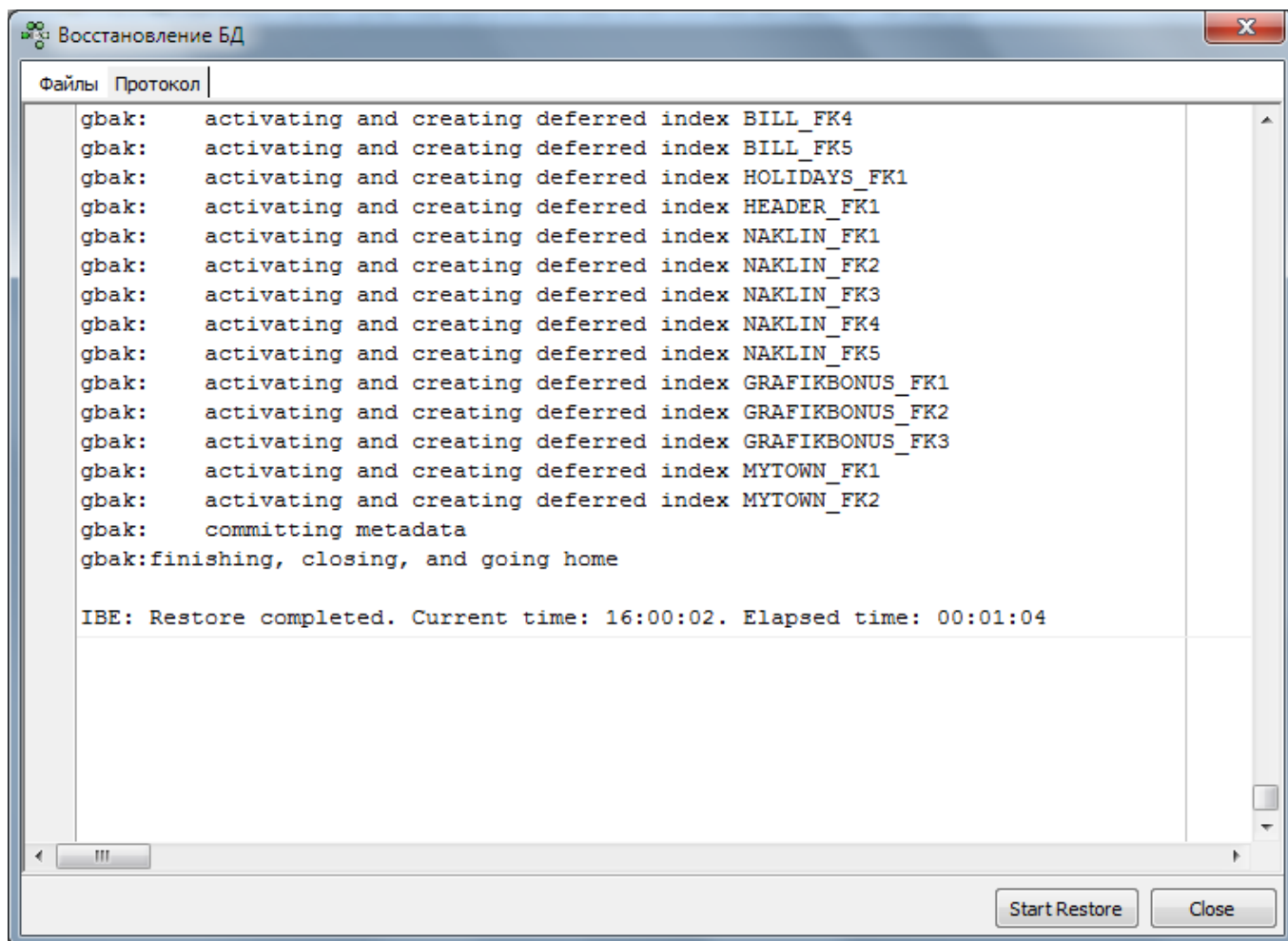
1. 1.2
2. IBEExpert.exe ( )
3. í . \DISTRIBUTIVES\HK-Software\IBExpert\IBExpert.exe  
IBExpert Multiple  
document interface (MDI).
4. \Options\Environment Options

OK



FireBird : «Default Client Library»  
 , \bin, fbclient.dll





9. CourierLight.exe  
CourierLight.ini

```
[Boot]
Databasename=C:\ CourierSoft\Databases\GKS.FDB
```

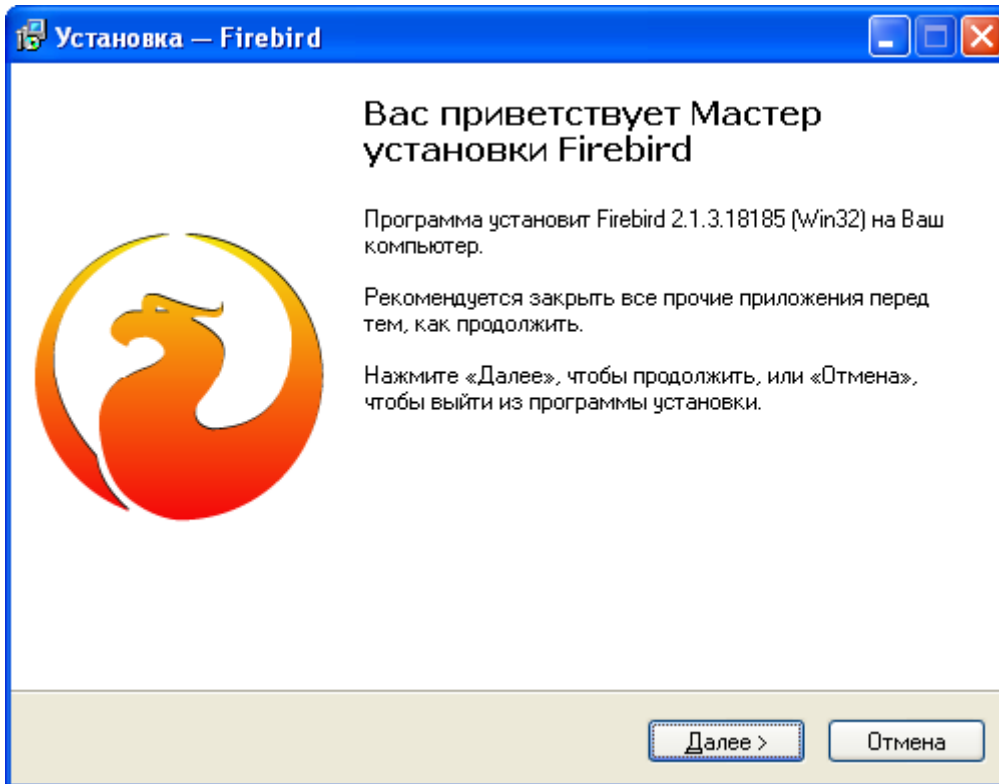
```
[Boot]
Databasename=\\192.168.0.4\C:\ CourierSoft\DATABASES\GKS.FDB
```

```
[Boot]
Databasename=192.168.0.4:C:\ CourierSoft\DATABASES\GKS.FDB
```

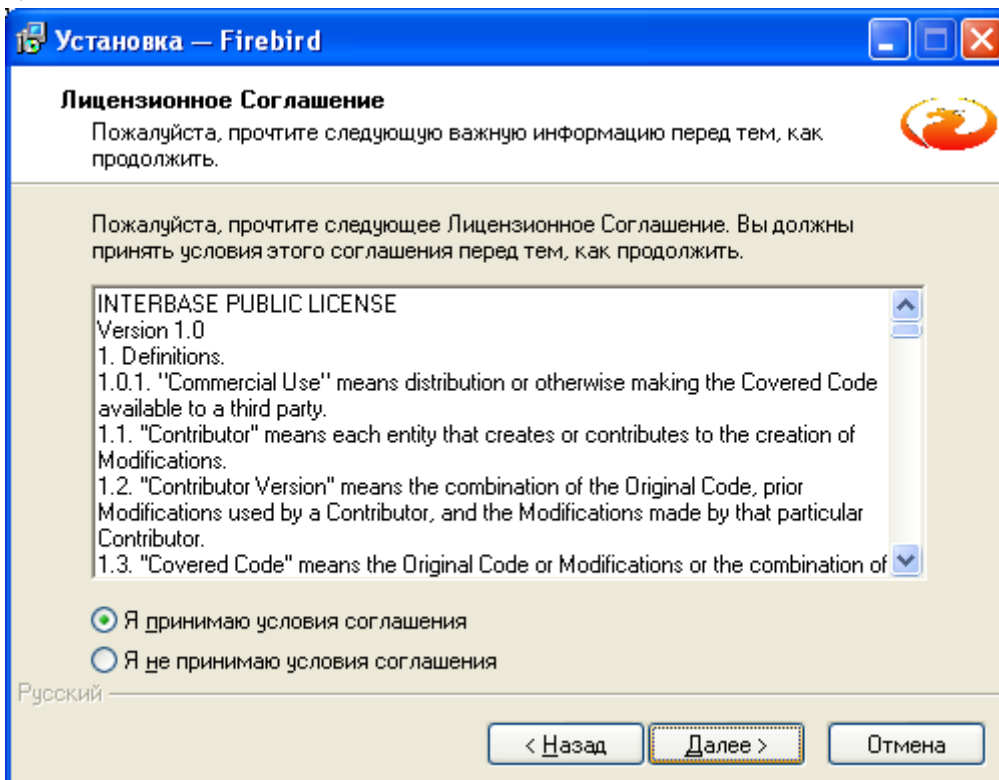
## 4.

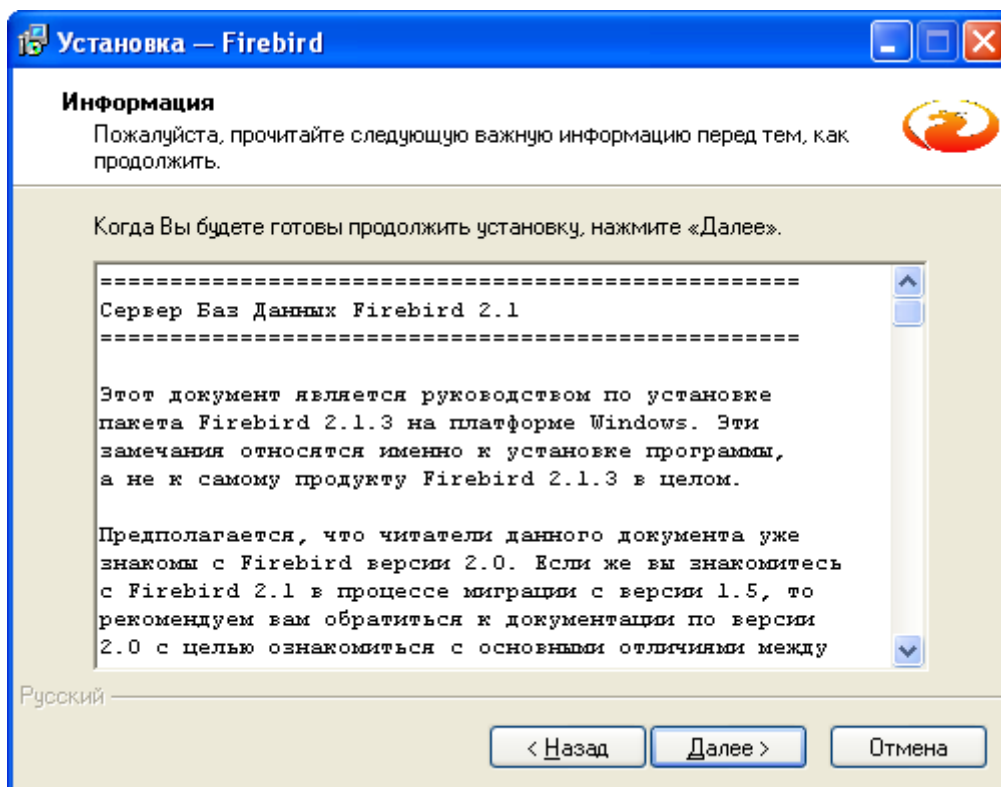
## Firebird

1. :  
InstallCourierNEW\DISTIBUTIVES\firebird\Firebird-2.5.0.26074\_1\_Win32.exe
- 2.
- 3.

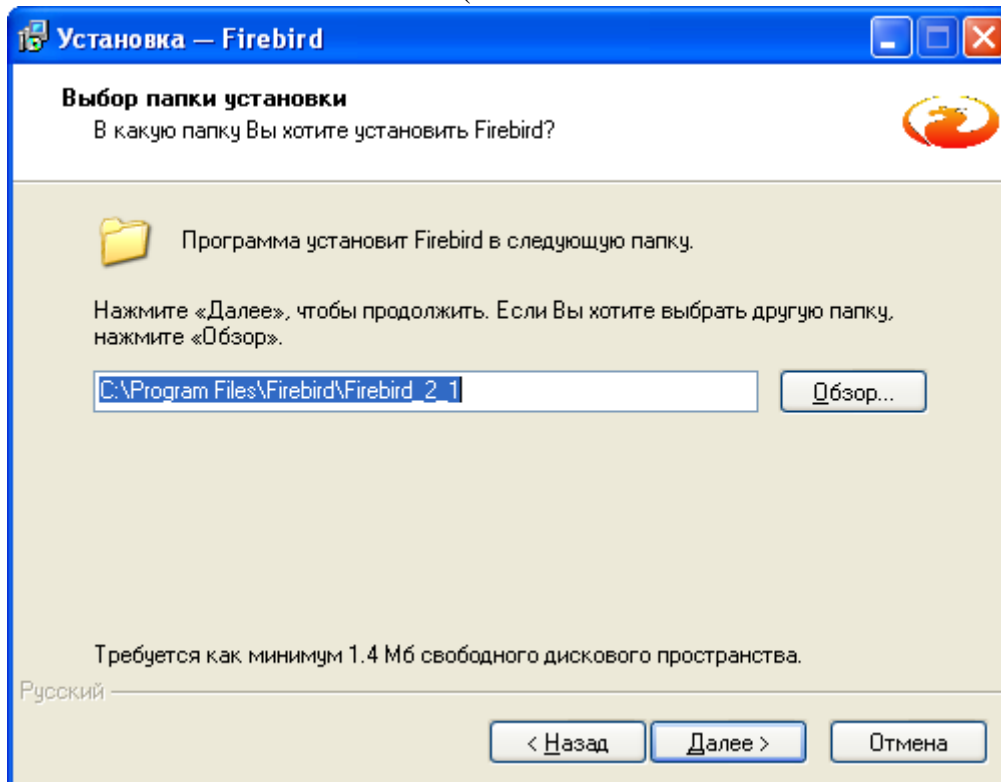


## 4.

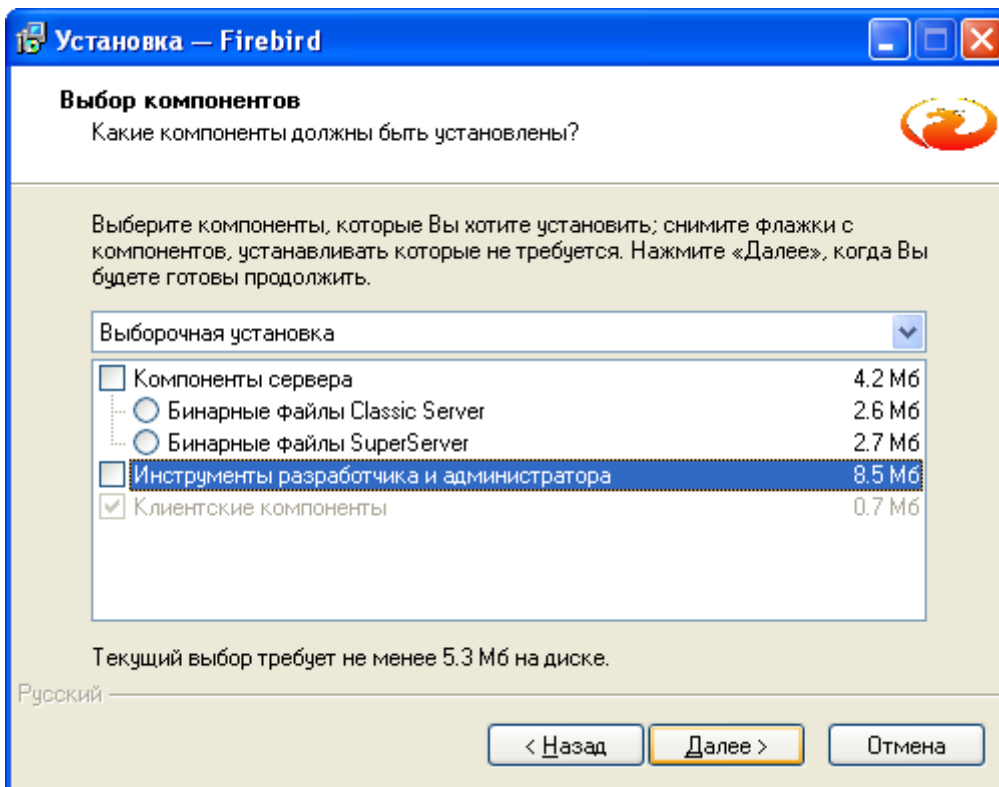




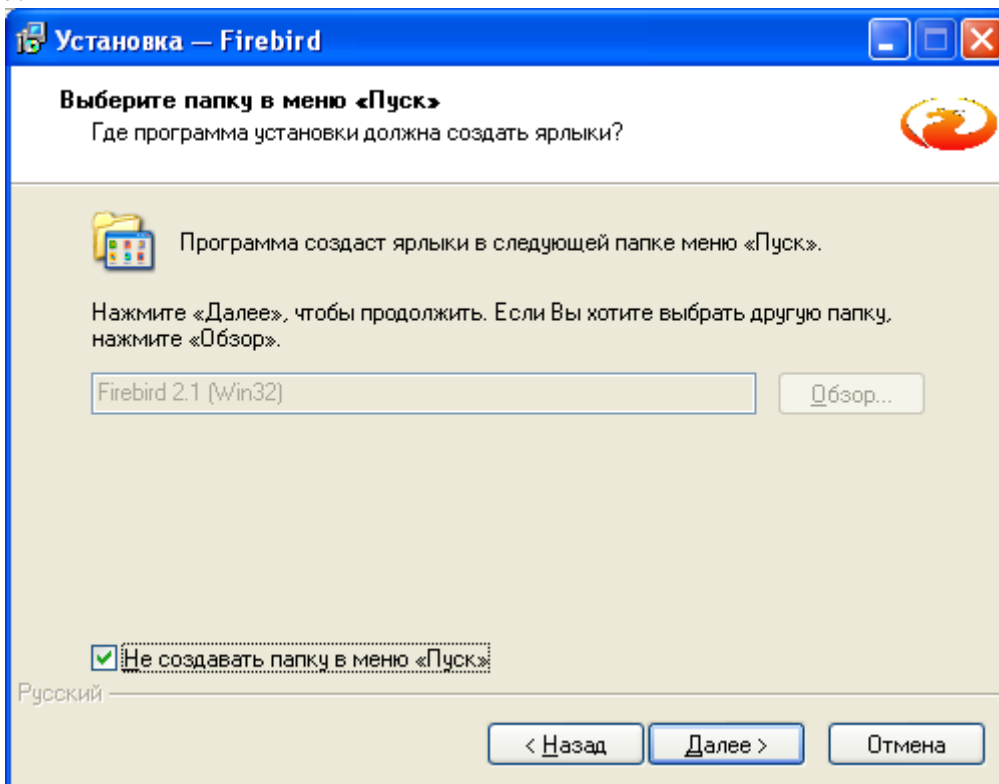
5. ( )



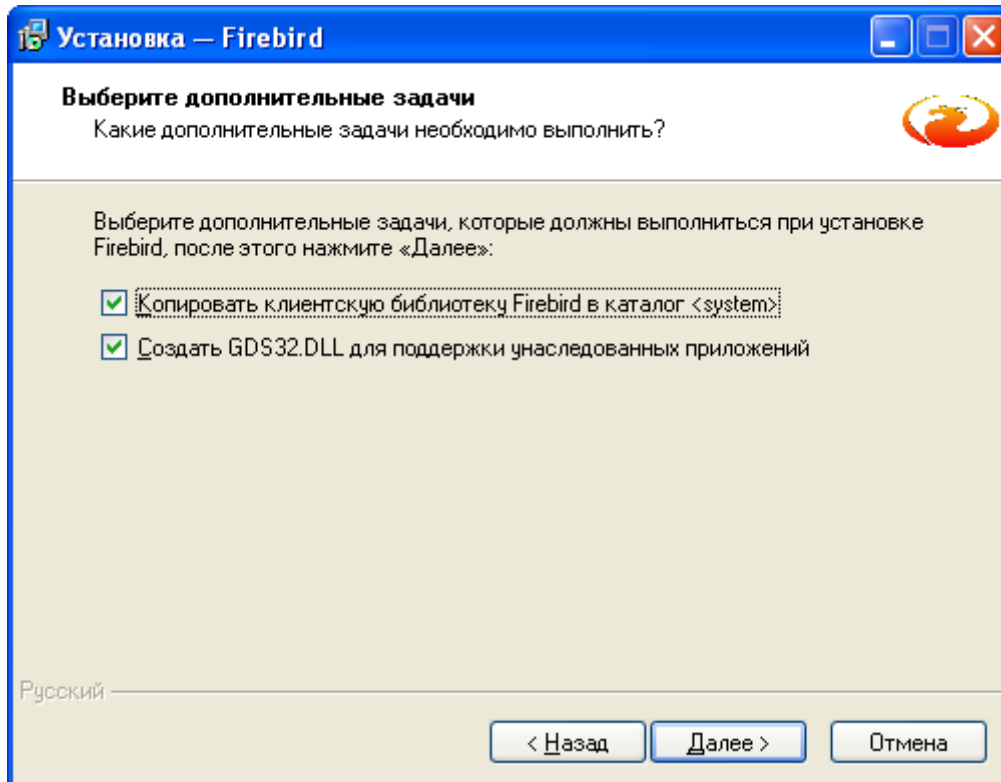
6.



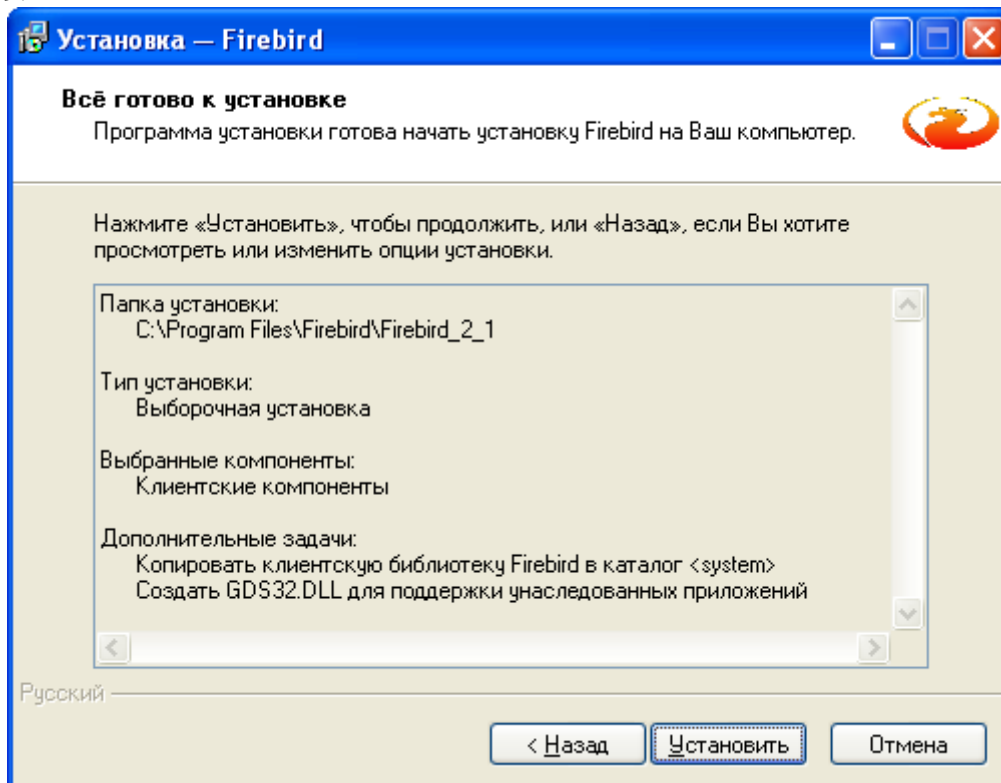
7.



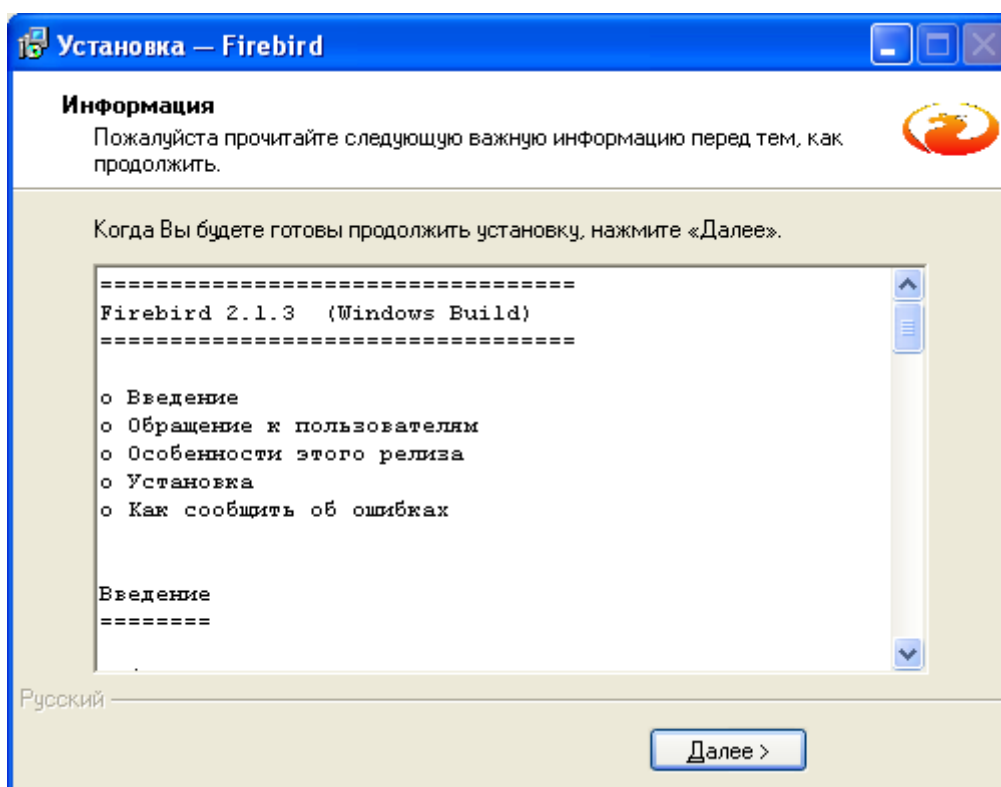
8.



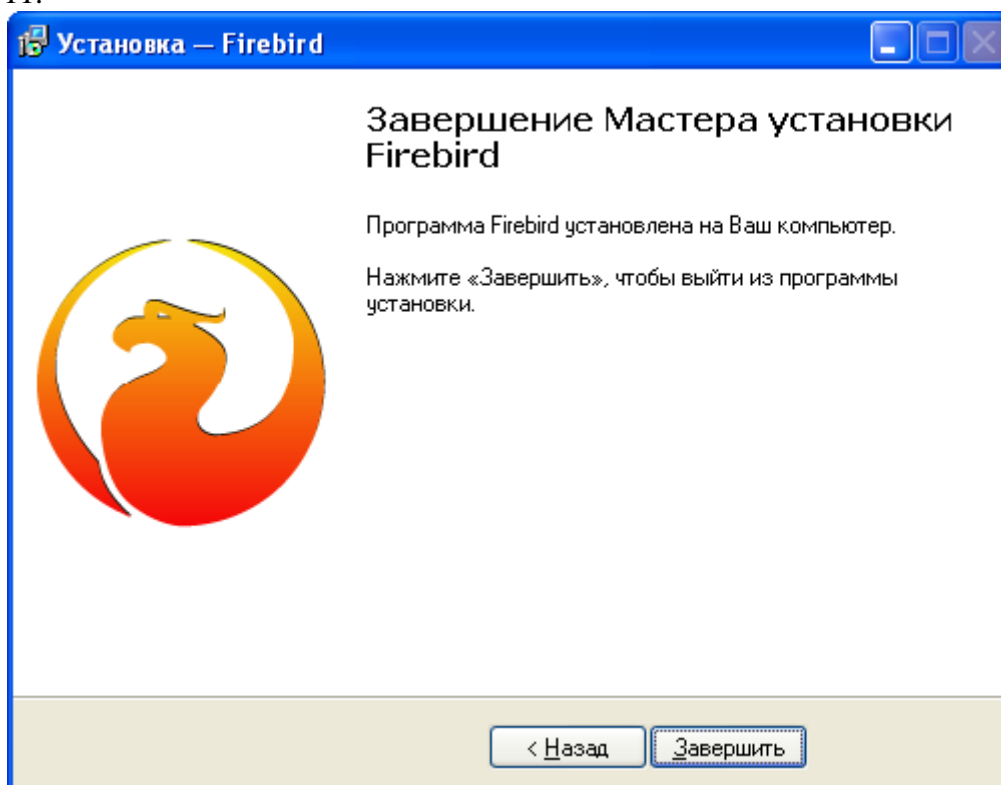
9.



10.



11.



12.

13.

:\TEMP

14.

í



5.

( )

**IBExpert**

1. IBExpert (í \CourierLight\DISTRIBUTIVES\IBExpert\ IBExpert.exe)

2.

3.

4. ( , 11- )

5. (Ctrl+L, 2- )

6.

7. :

8. (F9, 3- )

( )

**CourierLight.exe**

:

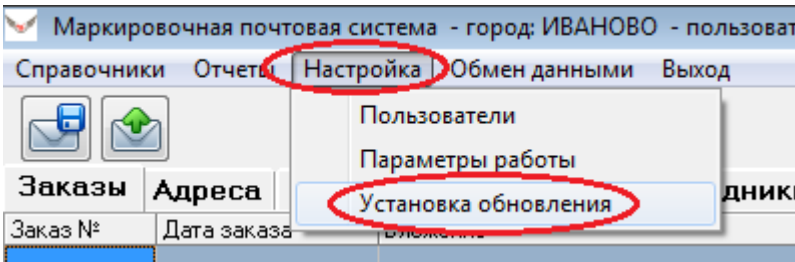
1. .(

)

2. < \_ >.sql

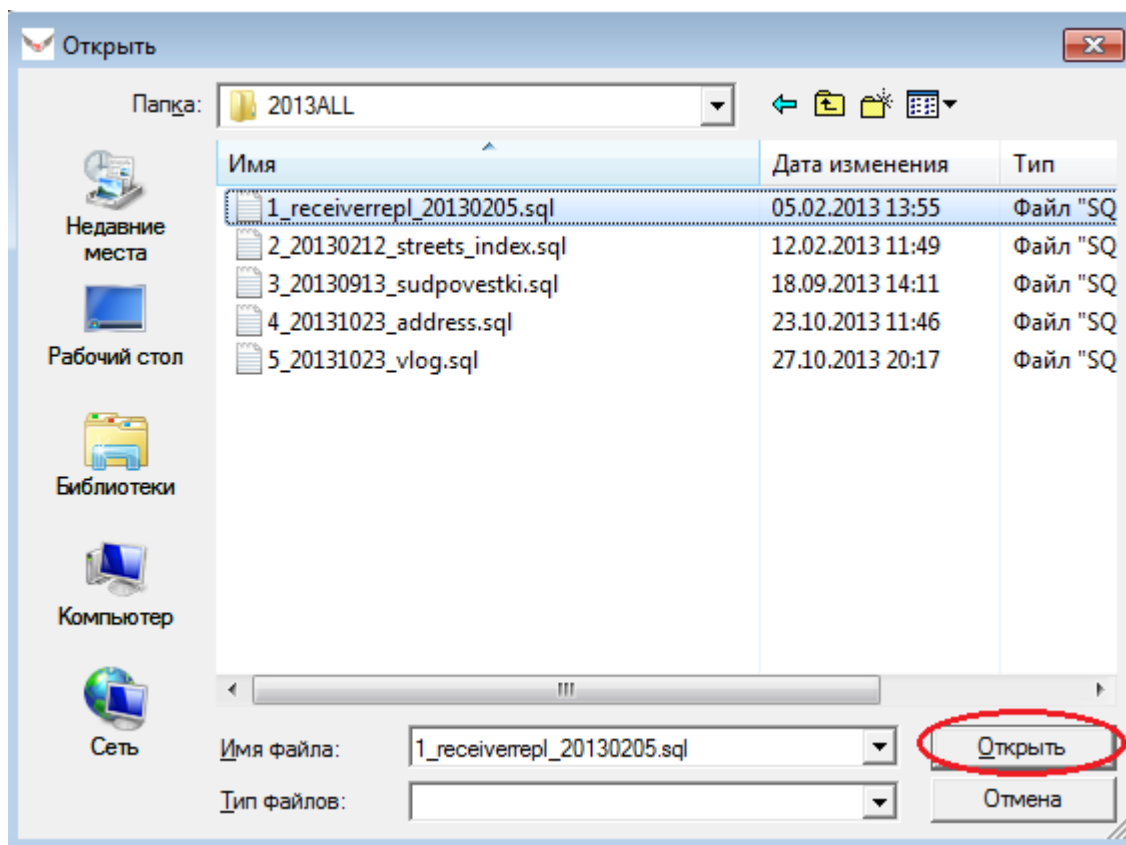
3. CourierLight.exe SYSDBA

4. . / /



5. < \_ >.sql

6. " "



7. "OK"

8. CourierLight.exe

9. CourierLight.exe .